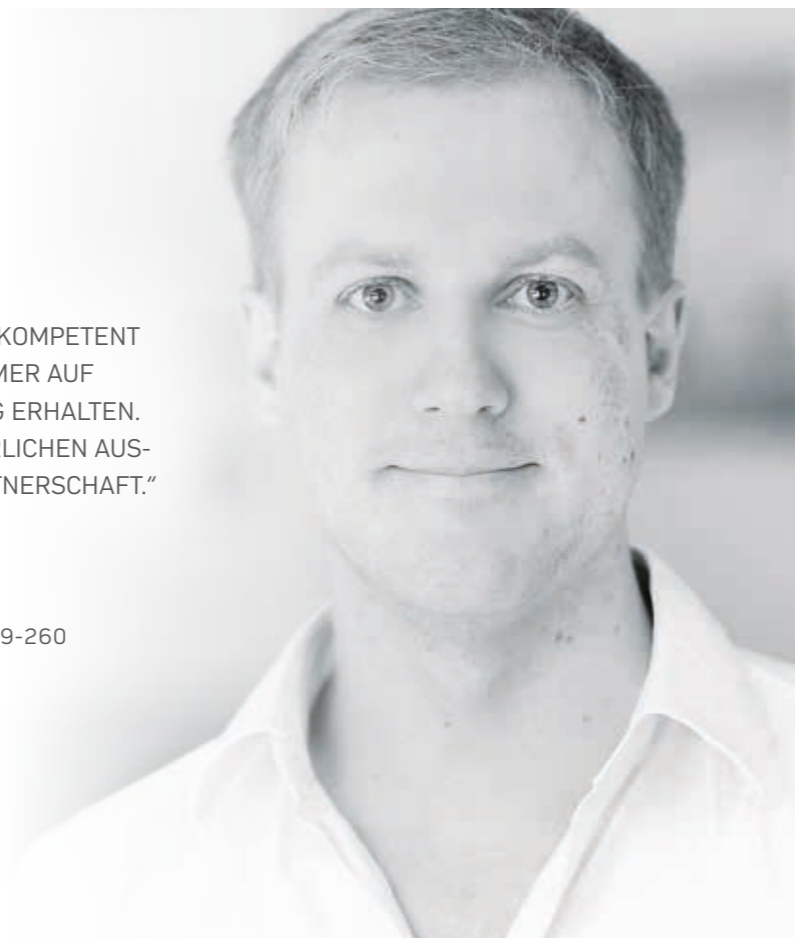


**DRÖSSER**  
STAHLHANDEL



**BLANK- UND  
QUALITÄTSSTAHL**



//

MEIN TEAM UND ICH STEHEN UNSEREN KUNDEN KOMPETENT UND PRAGMATISCH ZUR SEITE, DAMIT SIE IMMER AUF SCHNELLSTEM WEGE DIE FÜR SIE BESTE LÖSUNG ERHALTEN. DABEI SETZEN WIR AUF EINEN OFFENEN UND EHRLICHEN AUS-TAUSCH FÜR VERTRAUEN UND LANGFRISTIGE PARTNERSCHAFT."

**DOMINIK BREIDENBACH**

Teamleiter

Fon: +49 221 6789-205 | Fax: +49 221 6789-260

Mail: dbreidenbach@droesser.de



//

DIE BEDÜRFNISSE DER KUNDEN ERKENNEN UND SIE DANN MIT HOCHWERTIGEN UND ANFORDERUNGSKONFORMEN PRODUKTEN ZU BEGEISTERN, IST UNSER MOTTO. NICHT NUR PRODUKTE, SONDERN AUCH SERVICES PASSEN WIR GENAU AN DIE SPEZIFIKATIONEN AN, DIE DER KUNDE BRAUCHT. DAS IST DER DRÖSSER WEG."

**PHILIPP WIEGAND**

Kundenberater

Fon: +49 221 6789-207 | Fax: +49 221 6789-260

Mail: pwiegand@droesser.de

01

**BLANKGEZOGENER RUNDSTAHL**

//04



02

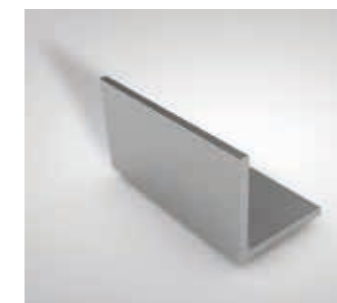
**BLANKGEZOGENER VIERKANTSTAHL**

//05

03

**BLANKGEZOGENER SECHSKANTSTAHL**

//05



04

**BLANKGEZOGENER WINKELSTAHL**

//06

05

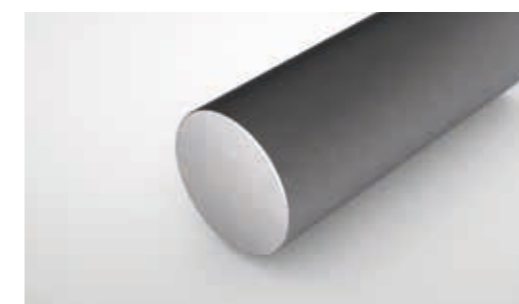
**BLANKGEZOGENER KEILSTAHL**

//07

06

**BLANKGEZOGENER FLACHSTAHL**

//08-18



07

**GEWALZTER QUALITÄTSRUNDSTAHL**

//19

► NACH DIN EN 10277, TOLERANZ NACH DIN EN 10278

S235JR+C/SH (St37K), S355J0+C/SH (St52K),  
C35+C/SH (C35K), C45+C/SH (C45K),  
11SMn30+C/SH (9SMn28K),  
11SMnPb30+C/SH (9SMnPb28K)

S235JR+C/SH (St37K), S355J0+C/SH (St52K),  
C35+C/SH (C35K), C45+C/SH (C45K),  
11SMn30+C/SH (9SMn28K),  
11SMnPb30+C/SH (9SMnPb28K)

Abmessung  
mm

3,0  
3,5  
4,0  
5,0  
6,0  
7,0  
8,0  
10,0  
12,0  
14,0  
15,0  
16,0  
18,0  
20,0  
22,0  
24,0  
25,0  
28,0  
30,0  
32,0  
35,0

Abmessung  
mm

40,0  
45,0  
50,0  
55,0  
60,0  
65,0  
70,0  
75,0  
80,0  
85,0  
90,0  
100,0  
110,0  
120,0  
130,0  
140,0  
150,0



**Hinweise**

Blankstahl muss, um ihn auf dem Transport zum Kunden vor Schaden zu bewahren, in vielen Fällen verpackt werden (§ 3 Abs. 1 Nr. 1 Verpackungsverordnung).

Dem Kunden ist freigestellt, die Verpackung auf eigene Kosten zurückzubringen.

Die Verpackung ist sortiert zurückzugeben, um ein Recycling zu gewährleisten.

NACH DIN EN 10277, TOLERANZ NACH DIN EN 10278 ◀  
STABLÄNGE CA. 3 M BZW. CA. 6 M

Vierkantstahl  
S235JR+C/SH (St37K), S355J0+C/SH (St52K),  
C45+C/SH (C45K), 11SMn30+C/SH (9SMn28K)

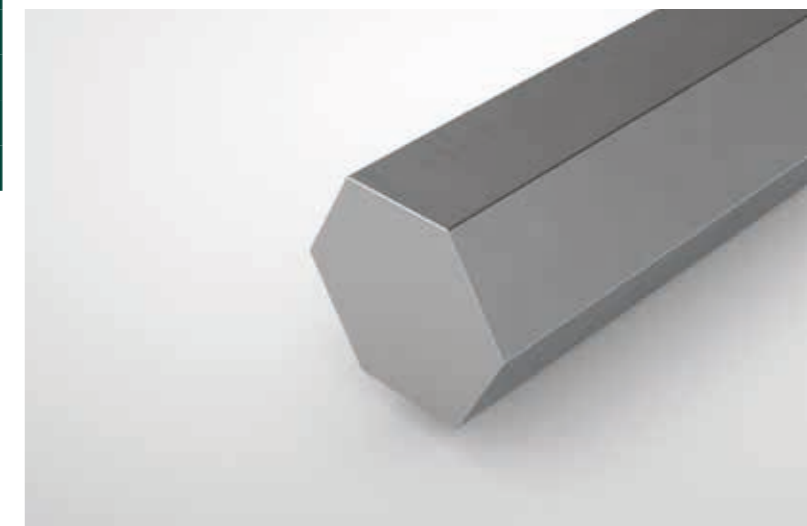
Sechskantstahl  
C45+C/SH (C45K), 11SMn30+C/SH (9SMn28K),

Abmessung  
mm

3,0  
4,0  
5,0  
6,0  
7,0  
8,0  
9,0  
10,0  
12,0  
14,0  
15,0  
16,0  
20,0  
25,0  
30,0  
35,0  
40,0  
45,0  
50,0  
55,0  
60,0  
70,0  
80,0  
90,0  
100,0

Abmessung  
mm

10,0  
12,0  
13,0  
14,0  
15,0  
17,0  
19,0  
22,0  
24,0  
27,0  
30,0  
32,0  
36,0  
41,0  
46,0  
50,0  
55,0  
60,0  
70,0  
80,0



► NACH DIN EN 10277, TOLERANZ NACH DIN EN 59370

S235JR+C/SH (St37K)

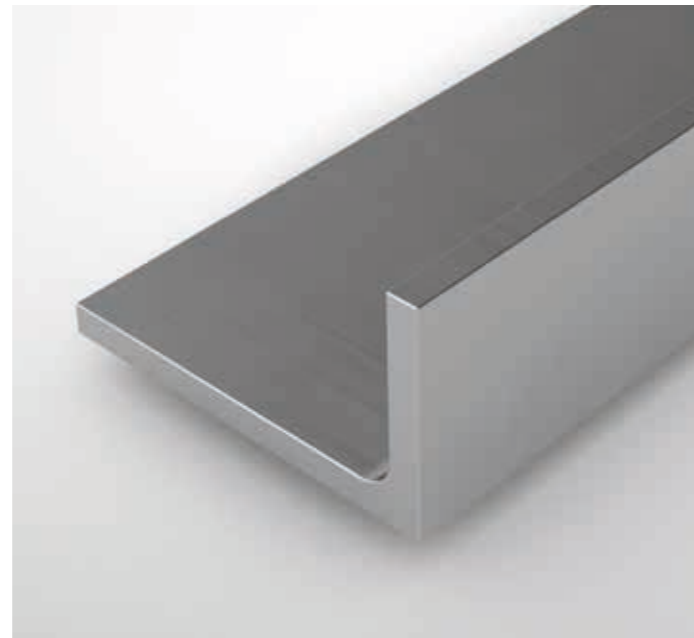
Abmessung  
mm

10 x 10 x 2  
12 x 12 x 2  
12 x 12 x 3  
15 x 15 x 2  
15 x 15 x 3  
15 x 15 x 4  
20 x 20 x 2  
20 x 20 x 3  
20 x 20 x 4  
20 x 20 x 5  
25 x 25 x 2  
25 x 25 x 3  
25 x 25 x 4  
25 x 25 x 5  
30 x 30 x 2  
30 x 30 x 3  
30 x 30 x 4  
30 x 30 x 5  
35 x 35 x 3  
35 x 35 x 4  
35 x 35 x 5  
40 x 40 x 3  
40 x 40 x 4  
40 x 40 x 5  
40 x 40 x 6  
45 x 45 x 4  
45 x 45 x 5  
50 x 50 x 5  
50 x 50 x 6  
60 x 60 x 6  
80 x 80 x 8  
100 x 100 x 10

S235JR+C/SH (St37K)

Abmessung  
mm

15 x 10 x 3  
20 x 10 x 3  
20 x 15 x 3  
25 x 15 x 3  
30 x 15 x 3  
30 x 20 x 3  
30 x 20 x 4  
40 x 20 x 3  
40 x 20 x 4  
40 x 20 x 5  
45 x 30 x 4  
45 x 30 x 5  
60 x 30 x 5  
60 x 40 x 5



NACH DIN EN 10277, TOLERANZ NACH DIN EN 6880 ◀

C45+C/SH (C45K)

Abmessung  
mm

8 x 5  
8 x 7  
10 x 6  
10 x 8  
12 x 8  
12 x 10  
14 x 6  
14 x 9  
16 x 7  
16 x 10  
18 x 7  
18 x 11  
20 x 8  
20 x 12  
22 x 9  
22 x 14  
25 x 9  
25 x 14  
28 x 16  
32 x 11  
32 x 18  
36 x 12  
36 x 20  
40 x 22  
45 x 25

C45+C/SH (C45K)

Abmessung  
mm

63 x 32  
70 x 36  
80 x 40  
90 x 45  
100 x 50  
5 x 5  
6 x 6  
7 x 7  
8 x 8  
10 x 10  
12 x 12  
14 x 14  
16 x 16  
18 x 18  
20 x 20  
22 x 22  
25 x 25  
30 x 30  
32 x 32  
35 x 35  
40 x 40  
50 x 50

► NACH DIN EN 10277, TOLERANZ NACH DIN EN 10278

*S235JR+C/SH (St37K), S355J0+C/SH (St52K),  
C45+C/SH (C45K)*

*S235JR+C/SH (St37K), S355J0+C/SH (St52K),  
C45+C/SH (C45K)*

**Abmessung  
mm**

**Abmessung  
mm**

5 x 2,0
5 x 2,5
5 x 3,0
5 x 4,0
6 x 2,0
6 x 2,5
6 x 3,0
6 x 4,0
7 x 2,0
7 x 2,5
7 x 3,0
7 x 4,0
7 x 5,0
7 x 6,0
8 x 2,0
8 x 2,5
8 x 3,0
8 x 4,0
8 x 5,0
8 x 6,0
8 x 7,0
9 x 2,0
9 x 2,5
9 x 3,0
9 x 4,0
9 x 5,0
9 x 6,0
9 x 7,0
10 x 2,0
10 x 2,5

10 x 3,0
10 x 4,0
10 x 5,0
10 x 6,0
10 x 7,0
10 x 8,0
11 x 2,0
11 x 2,5
11 x 3,0
11 x 4,0
11 x 5,0
11 x 6,0
11 x 7,0
11 x 8,0
12 x 2,0
12 x 2,5
12 x 3,0
12 x 4,0
12 x 5,0
12 x 6,0
12 x 7,0
12 x 8,0
12 x 10,0
13 x 2,0
13 x 2,5
13 x 3,0
13 x 4,0
13 x 5,0
13 x 6,0
13 x 7,0

NACH DIN EN 10277, TOLERANZ NACH DIN EN 10278 ◀

*S235JR+C/SH (St37K), S355J0+C/SH (St52K),  
C45+C/SH (C45K)*

*S235JR+C/SH (St37K), S355J0+C/SH (St52K),  
C45+C/SH (C45K)*

**Abmessung  
mm**

**Abmessung  
mm**

13 x 8,0
14 x 2,0
14 x 2,5
14 x 3,0
14 x 4,0
14 x 5,0
14 x 6,0
14 x 7,0
14 x 8,0
14 x 10,0
14 x 12,0
15 x 2,0
15 x 2,5
15 x 3,0
15 x 4,0
15 x 5,0
15 x 6,0
15 x 7,0
15 x 8,0
15 x 10,0
15 x 12,0
15 x 13,0
16 x 2,0
16 x 2,5
16 x 3,0
16 x 4,0
16 x 5,0
16 x 6,0
16 x 7,0
16 x 8,0

16 x 10,0
16 x 12,0
16 x 13,0
16 x 14,0
18 x 2,0
18 x 2,5
18 x 3,0
18 x 4,0
18 x 5,0
18 x 6,0
18 x 8,0
18 x 10,0
18 x 12,0
18 x 13,0
18 x 14,0
18 x 15,0
18 x 16,0
20 x 2,0
20 x 2,5
20 x 3,0
20 x 4,0
20 x 5,0
20 x 6,0
20 x 7,0
20 x 8,0
20 x 10,0
20 x 12,0
20 x 14,0
20 x 15,0
20 x 16,0

► NACH DIN EN 10277, TOLERANZ NACH DIN EN 10278

S235JR+C/SH (St37K), S355J0+C/SH (St52K),  
C45+C/SH (C45K)

Abmessung  
mm

20 x 18,0
22 x 2,0
22 x 2,5
22 x 3,0
22 x 4,0
22 x 5,0
22 x 6,0
22 x 7,0
22 x 8,0
22 x 10,0
22 x 12,0
22 x 14,0
22 x 15,0
22 x 16,0
22 x 18,0
24 x 2,0
24 x 2,5
24 x 3,0
24 x 4,0
24 x 5,0
24 x 6,0
24 x 8,0
24 x 10,0
24 x 12,0
24 x 14,0
24 x 15,0
24 x 16,0
24 x 18,0
24 x 20,0
25 x 2,0

S235JR+C/SH (St37K), S355J0+C/SH (St52K),  
C45+C/SH (C45K)

Abmessung  
mm

25 x 2,5
25 x 3,0
25 x 4,0
25 x 5,0
25 x 6,0
25 x 7,0
25 x 8,0
25 x 10,0
25 x 12,0
25 x 13,0
25 x 14,0
25 x 15,0
25 x 16,0
25 x 18,0
25 x 20,0
25 x 22,0
26 x 2,0
26 x 2,5
26 x 3,0
26 x 4,0
26 x 5,0
26 x 6,0
26 x 8,0
26 x 10,0
26 x 12,0
26 x 13,0
26 x 20,0
28 x 2,0
28 x 2,5
28 x 3,0

NACH DIN EN 10277, TOLERANZ NACH DIN EN 10278 ◀

S235JR+C/SH (St37K), S355J0+C/SH (St52K),  
C45+C/SH (C45K)

Abmessung  
mm

28 x 4,0
28 x 5,0
28 x 6,0
28 x 7,0
28 x 8,0
28 x 10,0
28 x 12,0
28 x 14,0
28 x 15,0
28 x 16,0
28 x 18,0
28 x 20,0
28 x 25,0
30 x 2,0
30 x 2,5
30 x 3,0
30 x 4,0
30 x 5,0
30 x 6,0
30 x 7,0
30 x 8,0
30 x 10,0
30 x 12,0
30 x 13,0
30 x 14,0
30 x 15,0
30 x 16,0
30 x 18,0
30 x 20,0
30 x 22,0

S235JR+C/SH (St37K), S355J0+C/SH (St52K),  
C45+C/SH (C45K)

Abmessung  
mm

30 x 25,0
32 x 2,0
32 x 2,5
32 x 3,0
32 x 4,0
32 x 5,0
32 x 6,0
32 x 7,0
32 x 8,0
32 x 10,0
32 x 12,0
32 x 13,0
32 x 14,0
32 x 15,0
32 x 16,0
32 x 18,0
32 x 20,0
32 x 25,0
35 x 2,0
35 x 2,5
35 x 3,0
35 x 4,0
35 x 5,0
35 x 6,0
35 x 7,0
35 x 8,0
35 x 10,0
35 x 12,0
35 x 14,0
35 x 15,0

► NACH DIN EN 10277, TOLERANZ NACH DIN EN 10278

*S235JR+C/SH (St37K), S355J0+C/SH (St52K),  
C45+C/SH (C45K)*

**Abmessung  
mm**

35 x 16,0  
35 x 18,0  
35 x 20,0  
35 x 25,0  
35 x 30,0  
36 x 2,0  
36 x 2,5  
36 x 3,0  
36 x 4,0  
36 x 5,0  
36 x 6,0  
36 x 8,0  
36 x 10,0  
36 x 12,0  
36 x 15,0  
36 x 16,0  
36 x 20,0  
36 x 25,0  
40 x 2,0  
40 x 2,5  
40 x 3,0  
40 x 4,0  
40 x 5,0  
40 x 6,0  
40 x 7,0  
40 x 8,0  
40 x 10,0  
40 x 12,0  
40 x 13,0  
40 x 14,0

*S235JR+C/SH (St37K), S355J0+C/SH (St52K),  
C45+C/SH (C45K)*

**Abmessung  
mm**

40 x 15,0  
40 x 16,0  
40 x 18,0  
40 x 20,0  
40 x 22,0  
40 x 25,0  
40 x 30,0  
40 x 35,0  
45 x 2,0  
45 x 2,5  
45 x 3,0  
45 x 4,0  
45 x 5,0  
45 x 6,0  
45 x 7,0  
45 x 8,0  
45 x 10,0  
45 x 12,0  
45 x 15,0  
45 x 16,0  
45 x 18,0  
45 x 20,0  
45 x 22,0  
45 x 25,0  
45 x 30,0  
45 x 32,0  
45 x 35,0  
45 x 40,0  
50 x 2,0  
50 x 2,5

NACH DIN EN 10277, TOLERANZ NACH DIN EN 10278 ◀

*S235JR+C/SH (St37K), S355J0+C/SH (St52K),  
C45+C/SH (C45K)*

**Abmessung  
mm**

50 x 3,0  
50 x 4,0  
50 x 5,0  
50 x 6,0  
50 x 7,0  
50 x 8,0  
50 x 10,0  
50 x 12,0  
50 x 13,0  
50 x 14,0  
50 x 15,0  
50 x 16,0  
50 x 18,0  
50 x 20,0  
50 x 22,0  
50 x 25,0  
50 x 30,0  
50 x 32,0  
50 x 35,0  
50 x 40,0  
50 x 45,0  
55 x 2,0  
55 x 2,5  
55 x 3,0  
55 x 4,0  
55 x 5,0  
55 x 6,0  
55 x 7,0  
55 x 8,0  
55 x 10,0

*S235JR+C/SH (St37K), S355J0+C/SH (St52K),  
C45+C/SH (C45K)*

**Abmessung  
mm**

55 x 12,0  
55 x 15,0  
55 x 16,0  
55 x 18,0  
55 x 20,0  
55 x 25,0  
55 x 30,0  
55 x 45,0  
56 x 2,0  
56 x 2,5  
56 x 3,0  
56 x 4,0  
56 x 6,0  
56 x 7,0  
56 x 8,0  
56 x 10,0  
56 x 12,0  
56 x 15,0  
56 x 16,0  
56 x 20,0  
56 x 25,0  
60 x 2,0  
60 x 2,5  
60 x 3,0  
60 x 4,0  
60 x 5,0  
60 x 6,0  
60 x 7,0  
60 x 8,0  
60 x 10,0

► NACH DIN EN 10277, TOLERANZ NACH DIN EN 10278

S235JR+C/SH (St37K), S355J0+C/SH (St52K),  
C45+C/SH (C45K)

Abmessung  
mm

60 x 12,0
60 x 14,0
60 x 15,0
60 x 16,0
60 x 18,0
60 x 20,0
60 x 25,0
60 x 30,0
60 x 32,0
60 x 35,0
60 x 40,0
60 x 45,0
60 x 50,0
63 x 2,0
63 x 2,5
63 x 3,0
63 x 4,0
63 x 5,0
63 x 6,0
63 x 8,0
63 x 10,0
63 x 12,0
63 x 15,0
63 x 16,0
63 x 20,0
63 x 25,0
63 x 32,0
63 x 40,0
65 x 2,0
65 x 2,5

S235JR+C/SH (St37K), S355J0+C/SH (St52K),  
C45+C/SH (C45K)

Abmessung  
mm

65 x 3,0
65 x 4,0
65 x 5,0
65 x 6,0
65 x 8,0
65 x 10,0
65 x 12,0
65 x 13,0
65 x 14,0
65 x 15,0
65 x 16,0
65 x 20,0
65 x 25,0
65 x 30,0
65 x 35,0
65 x 40,0
70 x 2,0
70 x 2,5
70 x 3,0
70 x 4,0
70 x 5,0
70 x 6,0
70 x 7,0
70 x 8,0
70 x 10,0
70 x 12,0
70 x 14,0
70 x 15,0
70 x 16,0
70 x 18,0

NACH DIN EN 10277, TOLERANZ NACH DIN EN 10278 ◀

S235JR+C/SH (St37K), S355J0+C/SH (St52K),  
C45+C/SH (C45K)

Abmessung  
mm

70 x 20,0
70 x 25,0
70 x 30,0
70 x 32,0
70 x 35,0
70 x 40,0
70 x 45,0
70 x 50,0
70 x 60,0
75 x 3,0
75 x 4,0
75 x 5,0
75 x 6,0
75 x 8,0
75 x 10,0
75 x 12,0
75 x 13,0
75 x 15,0
75 x 16,0
75 x 20,0
75 x 25,0
75 x 30,0
80 x 3,0
80 x 4,0
80 x 5,0
80 x 6,0
80 x 7,0
80 x 8,0
80 x 10,0
80 x 12,0

S235JR+C/SH (St37K), S355J0+C/SH (St52K),  
C45+C/SH (C45K)

Abmessung  
mm

80 x 15,0
80 x 16,0
80 x 20,0
80 x 22,0
80 x 25,0
80 x 30,0
80 x 32,0
80 x 35,0
80 x 40,0
80 x 45,0
80 x 50,0
80 x 60,0
90 x 3,0
90 x 4,0
90 x 5,0
90 x 6,0
90 x 8,0
90 x 10,0
90 x 12,0
90 x 15,0
90 x 16,0
90 x 20,0
90 x 25,0
90 x 30,0
90 x 32,0
90 x 40,0
90 x 45,0
90 x 50,0
100 x 3,0
100 x 4,0



► NACH DIN EN 10277, TOLERANZ NACH DIN EN 10278

*S235JR+C/SH (St37K), S355J0+C/SH (St52K),  
C45+C/SH (C45K)*

**Abmessung  
mm**

100 x 5
100 x 6
100 x 7
100 x 8
100 x 10
100 x 12
100 x 13
100 x 14
100 x 15
100 x 16
100 x 18
100 x 20
100 x 25
100 x 30
100 x 32
100 x 35
100 x 40
100 x 45
100 x 50
100 x 60
110 x 5
110 x 6
110 x 8
110 x 10
110 x 12
110 x 15
110 x 20
110 x 32
120 x 4
120 x 5

*S235JR+C/SH (St37K), S355J0+C/SH (St52K),  
C45+C/SH (C45K)*

**Abmessung  
mm**

120 x 6
120 x 8
120 x 10
120 x 12
120 x 14
120 x 15
120 x 16
120 x 20
120 x 22
120 x 25
120 x 30
120 x 40
120 x 50
120 x 60
125 x 5
125 x 6
125 x 8
125 x 10
125 x 12
125 x 13
125 x 15
125 x 16
125 x 20
125 x 25
125 x 30
125 x 32
125 x 40
125 x 50
130 x 5
130 x 6

NACH DIN EN 10277, TOLERANZ NACH DIN EN 10278 ◀

*S235JR+C/SH (St37K), S355J0+C/SH (St52K),  
C45+C/SH (C45K)*

**Abmessung  
mm**

130 x 8
130 x 10
130 x 12
130 x 15
130 x 20
130 x 25
130 x 30
140 x 5
140 x 6
140 x 8
140 x 10
140 x 12
140 x 15
140 x 16
140 x 20
140 x 25
140 x 30
140 x 32
150 x 5
150 x 6
150 x 8
150 x 10
150 x 12
150 x 15
150 x 16
150 x 20
150 x 25
150 x 30
150 x 32
150 x 40

*S235JR+C/SH (St37K), S355J0+C/SH (St52K),  
C45+C/SH (C45K)*

**Abmessung  
mm**

150 x 50
160 x 5
160 x 6
160 x 8
160 x 10
160 x 12
160 x 15
160 x 16
160 x 20
160 x 25
160 x 30
160 x 32
160 x 40
180 x 8
180 x 10
180 x 12
180 x 15
180 x 16
180 x 20
180 x 25
180 x 30
180 x 40
200 x 5
200 x 8
200 x 10
200 x 12
200 x 15
200 x 16
200 x 20
200 x 25

► NACH DIN EN 10277, TOLERANZ NACH DIN EN 10278

*S235JR+C/SH (St37K), S355J0+C/SH (St52K),  
C45+C/SH (C45K)*



**Abmessung  
mm**

- 200 x 30
- 200 x 32
- 200 x 40
- 200 x 50
- 250 x 10
- 250 x 12
- 250 x 15
- 250 x 20
- 250 x 25
- 250 x 30
- 250 x 40
- 250 x 50
- 300 x 10
- 300 x 12
- 300 x 15
- 300 x 20
- 300 x 25
- 300 x 30
- 300 x 40
- 300 x 50
- 350 x 10
- 350 x 20
- 350 x 25
- 350 x 30
- 350 x 40
- 350 x 50
- 400 x 10
- 400 x 20
- 400 x 25
- 400 x 30
- 400 x 40
- 400 x 50

NACH DIN EN 10060, TOLERANZ NACH DIN EN 10025 ◀

*C45, S355J2, 16MnCr5, 42CrMo4*

**Abmessung  
mm**

- 12
- 14
- 15
- 16
- 18
- 20
- 22
- 24
- 25
- 27
- 30
- 35
- 36
- 40
- 45
- 50
- 55
- 60
- 65
- 70
- 75
- 80
- 85
- 90
- 95
- 100
- 105
- 110
- 115
- 120

*C45, S355J2, 16MnCr5, 42CrMo4*

**Abmessung  
mm**

- 125
- 130
- 140
- 150
- 160
- 170
- 180
- 190
- 200
- 210
- 220
- 230
- 240
- 250
- 260
- 270
- 300

Weitere Abmessungen können für Sie beschafft werden.

**DRÖSSER**

**Peter Drösser GmbH**

Ackerstraße 144 // 51065 Köln

Fon +49 221 6789-0 // Fax +49 221 6789-260

info@droesser.de // www.droesser.de